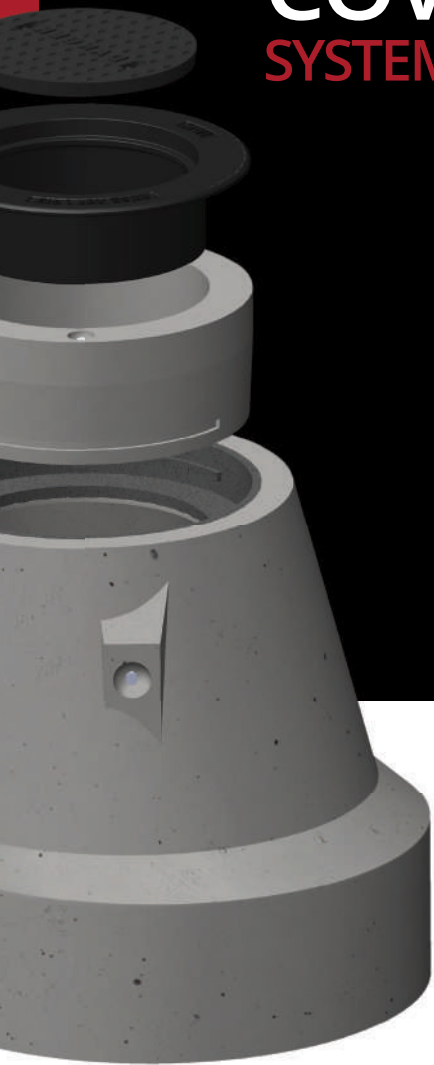
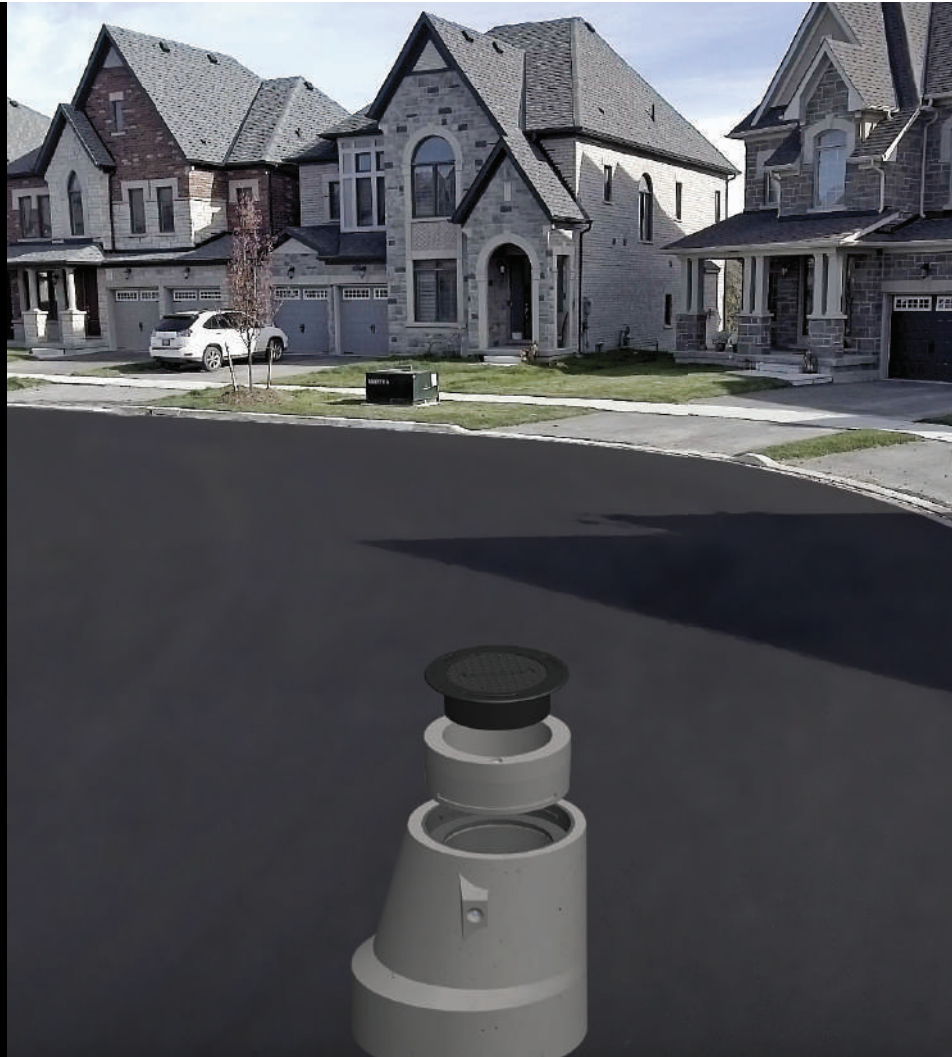




WE **GUARANTEE**
OUR PRODUCT!

INTEGRATED
**FRAME &
COVER
SYSTEM**



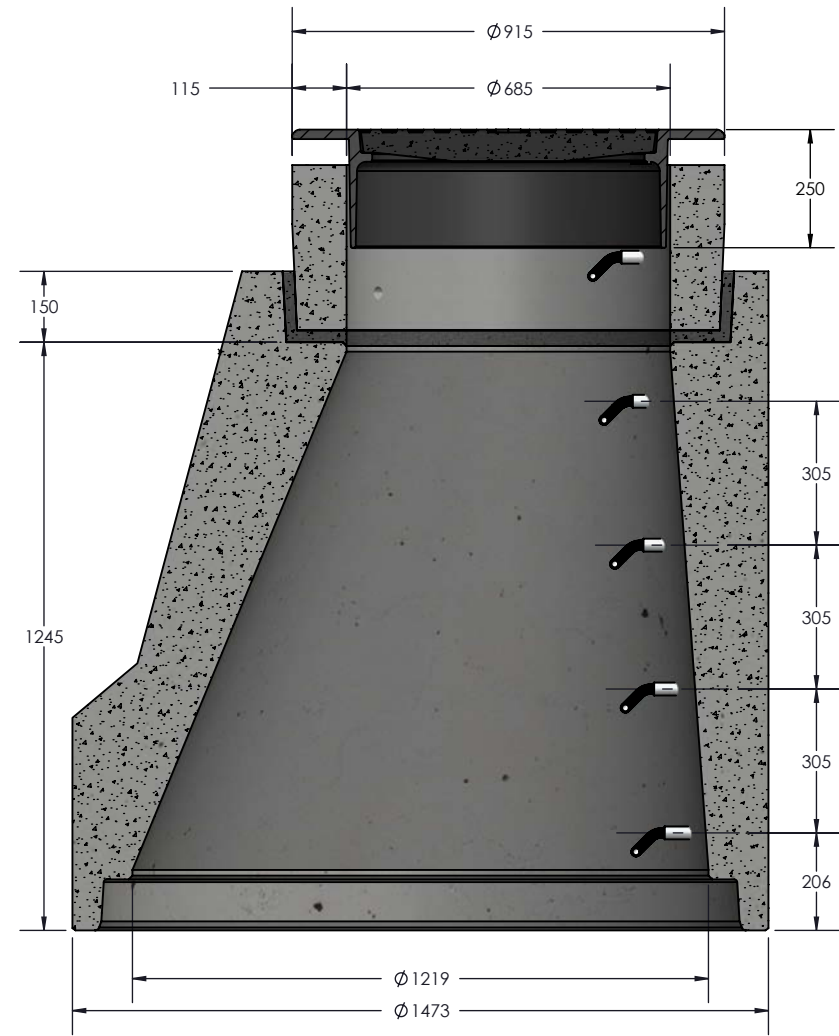
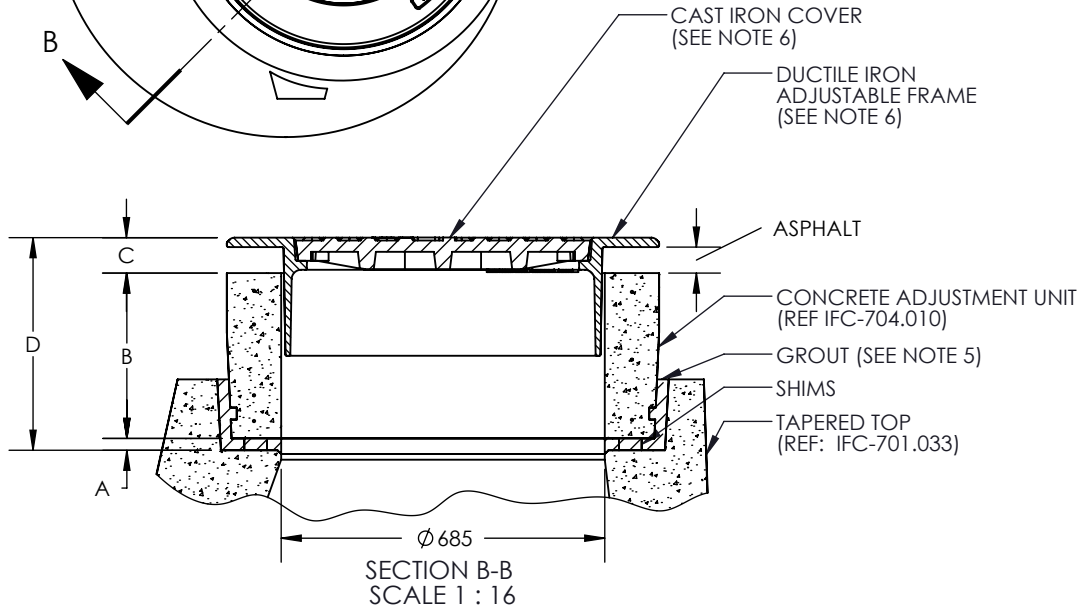
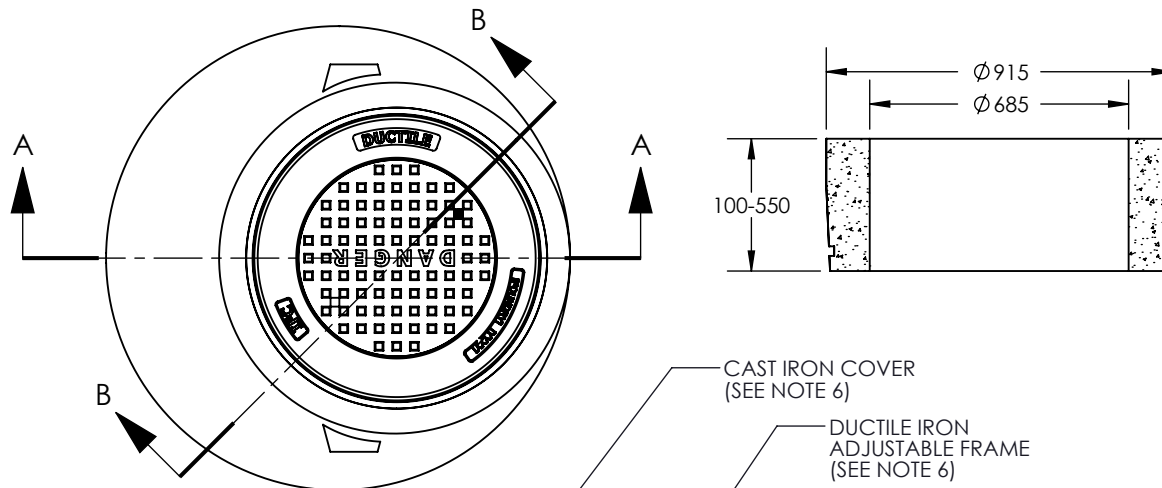
IFC MAINTENANCE HOLE SYSTEM

A SOLID, ROBUST, IMPENETRABLE MH SYSTEM THAT LASTS
MUCH LONGER THAN CONVENTIONAL INSTALLATIONS

DETAILED DRAWINGS



www.ifcmhsystem.com



DIMENSION	NOTES
A	ADJUSTMENT RANGE: 25 - 100mm.
B	STANDARD HEIGHT, CONCRETE ADJUSTMENT UNIT: 350mm. ALSO AVAILABLE: 100, 150, 200, 250, 300, 400, 450, 500, 550mm.
C	DUCTILE IRON FRAME ADJUSTMENT RANGE: 70 - 200 mm.
D	OVERALL ADJUSTMENT: MIN 195 mm (USING 100mm C.A.U.) MAX 850 mm (USING 550mm C.A.U.)

REV	DATE	RECORD OF CHANGE	BY
1	2015.02.06	MODIFIED FRAME FLANGE DIAMETER, HEIGHT, DIMS A, C, D ADJUSTED TO SUIT MODIFIED FRAME.	IB
2	2015.08.25	ADDED ADJ UNITS: 300, 400, 500	IB
3	2016.01.15	REVISED TITLE BLOCK	IB
4	2016.03.04	CORRECTED DIM 'C'.	IB
5	2018.07.10	ADJUSTED FRAME LENGTH, DIM 'C'.	IB
6	2018.09.28	'DUCTILE IRON FRAME' WAS 'CAST IRON'.	IB
7	2020.05.12	UPDATED MARKING ON FRAME	IB

SECTION A-A
SCALE 1:16

- MINIMUM CONCRETE STRENGTH AT 28 DAYS: 30 MPa.
- REINFORCEMENT: AS PER CSA A257.4 - 09.
- 25 mm MINIMUM COVER ON ALL REINFORCING STEEL.
- CONCRETE ADJUSTMENT UNIT CAN BE ORIENTED TO SUIT HEIGHT AND ANGLE REQUIRED. UNIT DEPICTED IS 350mm.
- GROUT REQUIREMENTS: NON-SHRINK; MINIMUM 50 MPa AT 28 DAYS; TO BE INSTALLED ONLY AS PER MANUFACTURER APPLICATION GUIDELINES.
- COVER DEPICTED IS PER OPSD 401.01, TYPE A. OTHER OPS-COMPLIANT COVERS AVAILABLE.

NOTICE: PROPRIETARY SUBJECT MATTER THIS DRAWING CONTAINS SUBJECT MATTER PROPRIETARY TO DECAST LTD. AND MAY BE COVERED BY ONE OR MORE INTELLECTUAL PROPERTY RIGHTS INCLUDING TRADE SECRET CONFIDENTIAL INFORMATION, COPYRIGHT, PATENT, DESIGN AND OTHER INTELLECTUAL PROPERTY RIGHTS OF DECAST LTD. UPON RECEIPT OF THIS DRAWING THE RECIPIENT IRREVOCABLY AGREES THAT ALL CONTENTS OF THE DRAWING TOGETHER WITH THE INTELLECTUAL PROPERTY RIGHTS HERETO IS AND REMAIN THE PROPERTY OF DECAST LTD. NO RIGHT TO REPRODUCE, DISCLOSE, DISSEMINATE OR OTHERWISE DEAL WITH THE SUBJECT MATTER OF THE DRAWING IS GIVEN NOR IS ANY LICENSE RIGHT OR OTHER ENTITLEMENT GIVEN WITH RESPECT TO THE INTELLECTUAL PROPERTY RIGHTS IN THE SUBJECT MATTER WITHOUT THE EXPRESS PRIOR WRITTEN PERMISSION OF DECAST LTD.

DECAST

T: 705 734 2892
TF: 800 461 5632
F: 705 734 2920

8807 COUNTY ROAD 56
UTOPIA, ON L0M 1T0
decastltd.com

PROJECT:
IFC-MH

MATERIAL:
N/A, ASSEMBLY

DRAWN BY:
IB

WEIGHT:
2436 kg

DATE:
2015.01.15

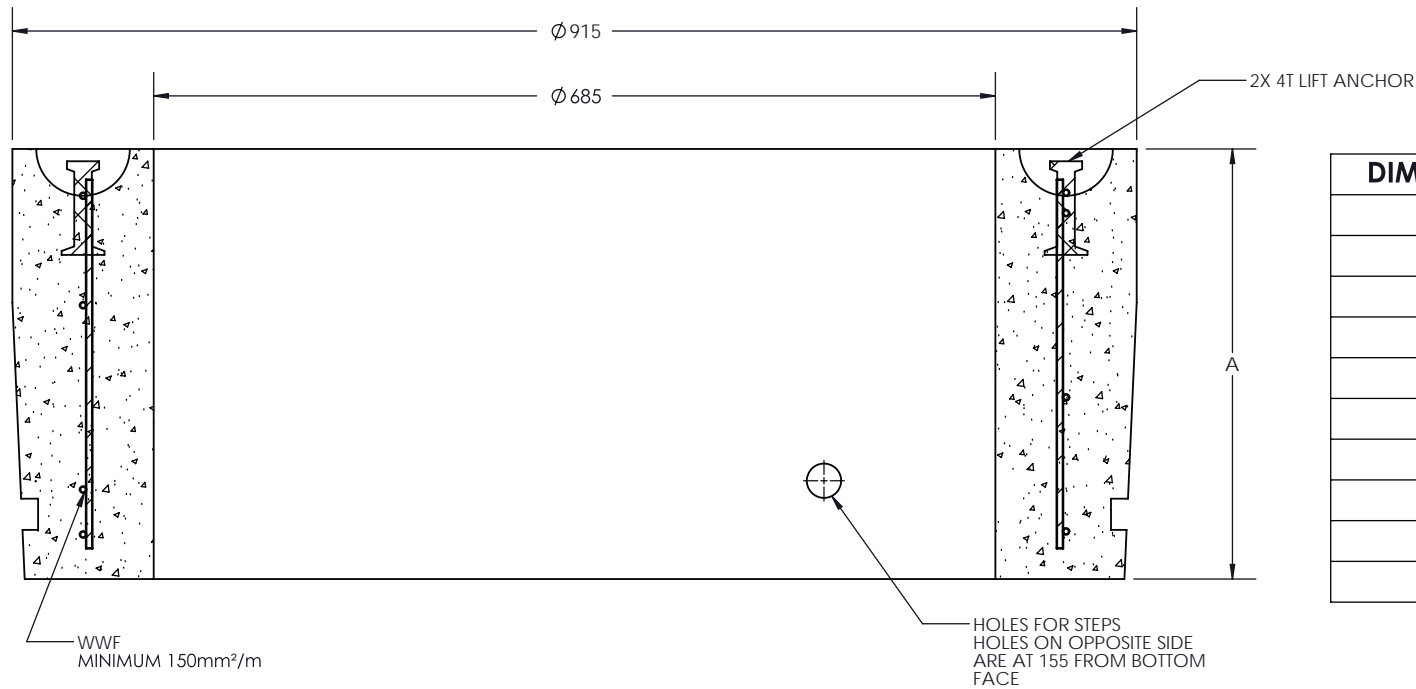
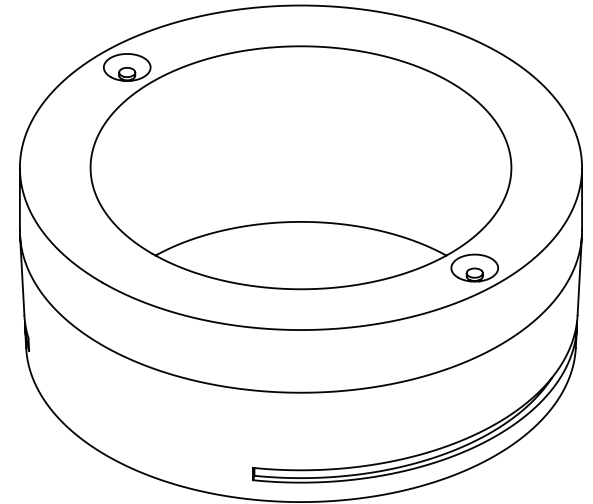
REVISED:
2020.05.12

DESCRIPTION:
IFC MAINTENANCE
HOLE TAPERED TOP
ASSEMBLY

DWG No:
IFC-701.030

SCALE: 1:24
PAGE No: 1 OF 1
REVISION: 7

REV	DATE	RECORD OF CHANGE	BY
1	2015.05.12	ADDED 100, 300, 400	IB
2	2015.08.25	ADDED 500	IB
3	2016.01.15	REVISED TITLE BLOCK	IB



DIMENSION A	MASS (kg)
100	61
150	95
200	129
250	164
300	198
350	233
400	267
450	302
500	336
550	371

- DESIGNED AND MANUFACTURED TO C.S.A. A257.4-09.
- MINIMUM CONCRETE STRENGTH AT 28 DAYS: 35 MPa.
- REINFORCEMENT MINIMUM YIELD STRENGTH: 500 MPa.
- 25 mm MINIMUM COVER ON ALL REINFORCING STEEL.
- REINFORCEMENT CENTERED IN WALL ±10mm.
- 350 UNIT IS DEPICTED. DIMENSIONS SHOWN FOR 350 UNIT ARE TYPICAL FOR ALL PIECES.
- UNITS SMALLER THAN 350 mm DO NOT HAVE STEP HOLES.
- UNITS SMALLER THAN 250 mm USE A SINGLE REINFORCEMENT HOOP, MINIMUM W6 WIRE.

NOTICE: PROPRIETARY SUBJECT MATTER THIS DRAWING CONTAINS SUBJECT MATTER PROPRIETARY TO DECAST LTD. AND MAY BE COVERED BY ONE OR MORE INTELLECTUAL PROPERTY RIGHTS INCLUDING TRADE SECRET, CONFIDENTIAL INFORMATION, COPYRIGHT, PATENT, DESIGN AND OTHER INTELLECTUAL PROPERTY RIGHTS OF DECAST LTD. UPON RECEIPT OF THIS DRAWING THE RECIPIENT IRREVOCABLY AGREES THAT ALL CONTENTS OF THE DRAWING TOGETHER WITH THE INTELLECTUAL PROPERTY RIGHTS THERE TO IS AND REMAIN THE PROPERTY OF DECAST LTD. NO RIGHT TO REPRODUCE, DISCLOSE, DISSEMINATE OR OTHERWISE DEAL WITH THE SUBJECT MATTER OF THE DRAWING IS GIVEN NOR IS ANY LICENSE RIGHT OR OTHER ENTITLEMENT GIVEN WITH RESPECT TO THE INTELLECTUAL PROPERTY RIGHTS IN THE SUBJECT MATTER WITHOUT THE EXPRESS PRIOR WRITTEN PERMISSION OF DECAST LTD.

DECAST

T: 705 734 2892
 TF: 800 461 5632
 F: 705 734 2920

8807 COUNTY ROAD 56
 UTOPIA, ON L0M 1T0
 decastltd.com

PROJECT:
IFC-MH

MATERIAL:
AS NOTED

DRAWN BY:
IB

WEIGHT:
129 kg

DATE:
2015.01.15

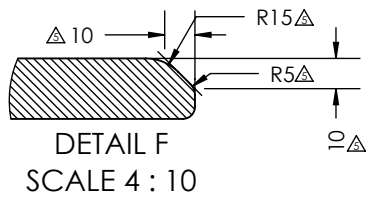
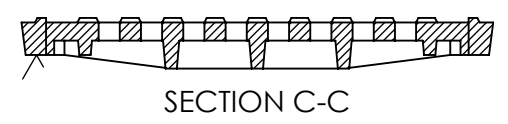
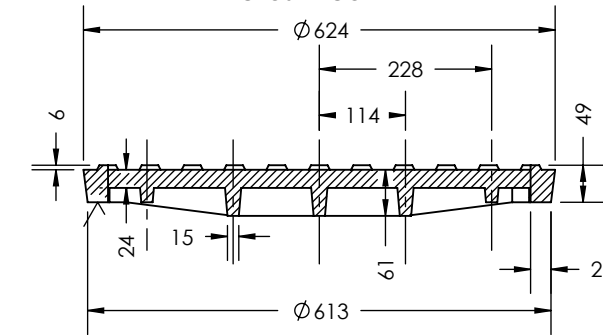
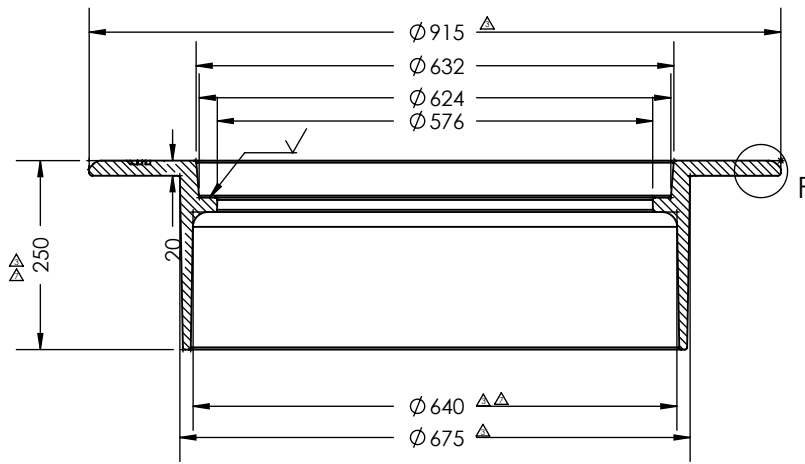
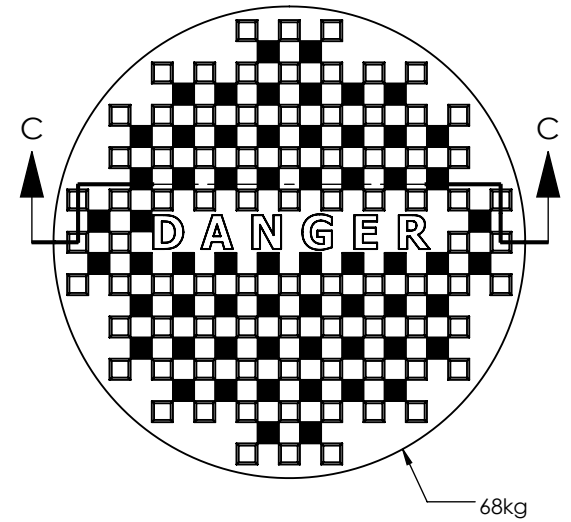
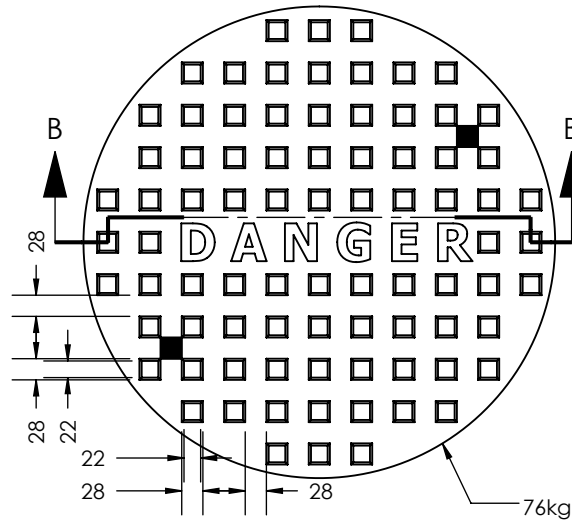
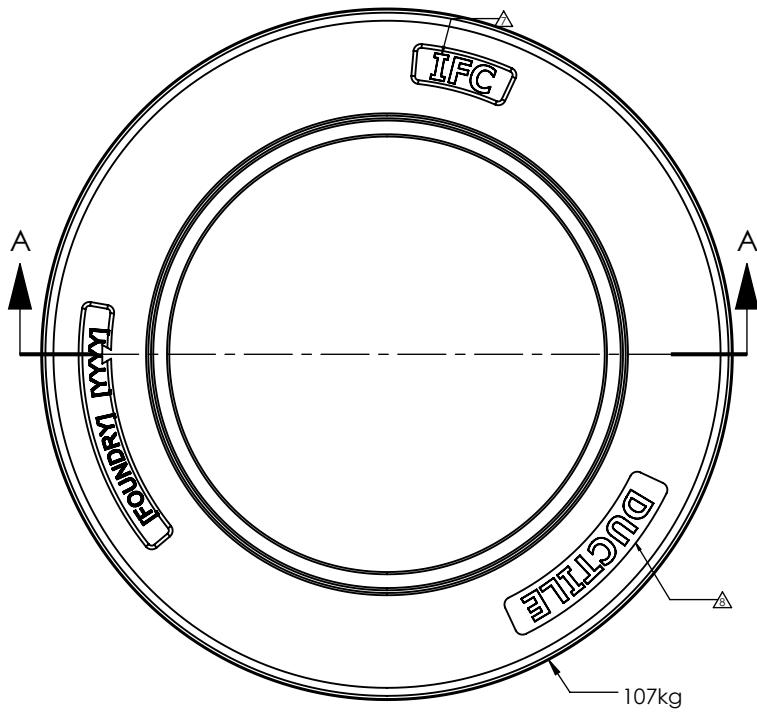
REVIS'D BY:
MR

REVIS'D:
2016.01.15

DESCRIPTION:
IFC CONCRETE
ADJUSTMENT UNIT

DWG No:
IFC-704.010

SCALE: 1:12
 PAGE No: 1 OF 1
 REVISION: 3



SECTION A-A

SECTION B-B

SECTION C-C

DETAIL F
SCALE 4 : 10

REV.	DESCRIPTION	DATE	BY
8	ADDED "DUCTILE" EMBOSING.	2020.05.12	IB
7	FRAME MATERIAL WAS GREY CAST IRON. HEIGHT WAS 185. BARREL ID WAS Ø646. REMOVED "DECAST LTD." EMBOSING.	2018.06.15	IB
6	CLARIFIED COMPONENT WEIGHTS. NO DESIGN CHANGES	2017.05.01	IB
5	ADDED TOP EDGE CHAMFER	2016.06.24	IB
4	UPDATED TITLE BLOCK	2016.01.15	IB
3	FRAME: Ø915 WAS Ø860, Ø875 WAS Ø860, 190 WAS 225	2015.02.04	IB
2	UPDATED FRAME: REMOVED LIFT POINTS, PERIMETER CHAMFER	2014.11.10	IB

- NOTES**
- ALL DIMENSIONS IN MILLIMETERS UNLESS OTHERWISE SHOWN.
 - COVER MATERIAL: AS PER OPSS 1850.
 - FRAME MATERIAL: DUCTILE IRON ASTM A536 CLASS 80-55-06
 - DIMENSIONS OF TYPE A AND B COVERS ARE THE SAME, EXCEPT FOR VENT HOLES IN TYPE B.

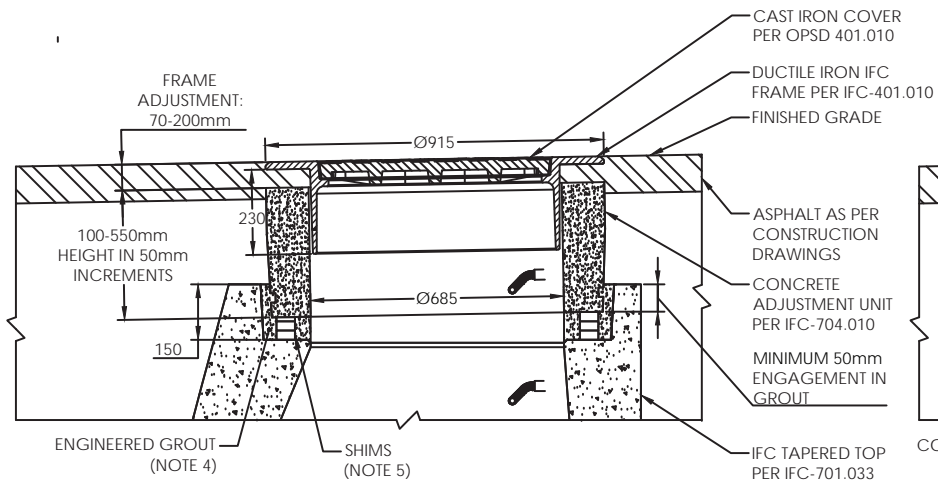
NOTICE: PROPRIETARY SUBJECT MATTER THIS DRAWING CONTAINS SUBJECT MATTER PROPRIETARY TO DECAST LTD. AND MAY BE COVERED BY ONE OR MORE INTELLECTUAL PROPERTY RIGHTS INCLUDING TRADE SECRET CONFIDENTIAL INFORMATION, COPYRIGHT, PATENT, DESIGN AND OTHER INTELLECTUAL PROPERTY RIGHTS OF DECAST LTD. UPON RECEIPT OF THIS DRAWING THE RECIPIENT IRREVOCABLY AGREES THAT ALL CONTENTS OF THE DRAWING TOGETHER WITH THE INTELLECTUAL PROPERTY RIGHTS THERETO IS AND REMAIN THE PROPERTY OF DECAST LTD. NO RIGHT TO REPRODUCE, DISCLOSE, DISSEMINATE OR OTHERWISE DEAL WITH THE SUBJECT MATTER OF THE DRAWING IS GIVEN NOR IS ANY LICENSE RIGHT OR OTHER ENTITLEMENT GIVEN WITH RESPECT TO THE INTELLECTUAL PROPERTY RIGHTS IN THE SUBJECT MATTER WITHOUT THE EXPRESS PRIOR WRITTEN PERMISSION OF DECAST LTD.



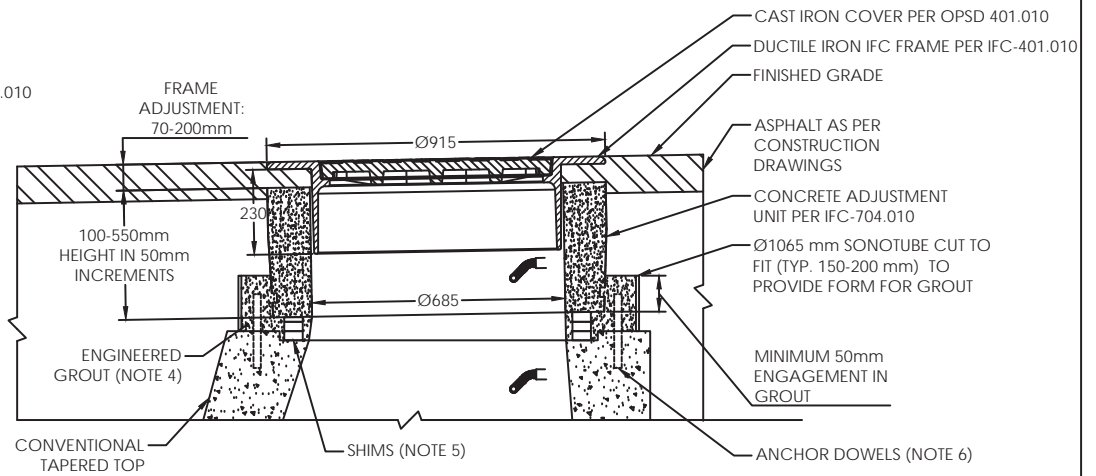
T: 705 734 2892
 TF: 800 461 5632
 F: 705 734 2920

8807 COUNTY ROAD 56
 UTOPIA, ON L0M 1T0
 decastltd.com

PROJECT: IFC-MH		DESCRIPTION: IFC-MH FRAME AND COVER	
MATERIAL: AS NOTED	WEIGHT: 183 kg	DATE: 2015.01.15	DWG No: IFC-401.010
DRAWN BY: IB	CHK'D BY: MR	REVISED: 2020.05.12	SCALE: 1:10
		PAGE No: 1 OF 1	REVISION: 8



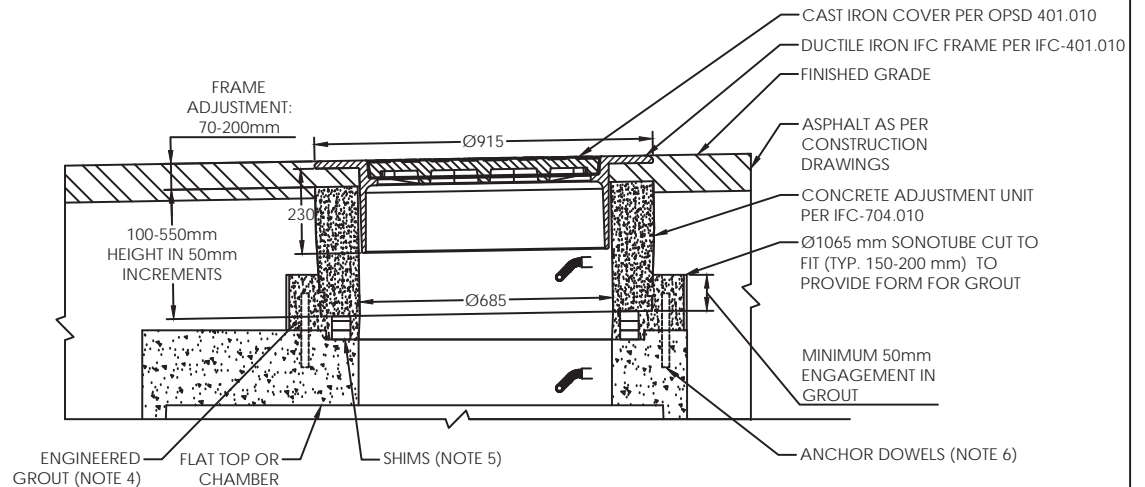
1. INSTALLATION ON IFC TAPERED TOP



2. INSTALLATION ON CONVENTIONAL TAPERED TOP

GENERAL NOTES:

1. CONCRETE STRENGTH—MINIMUM 30 MPa AT 28 DAYS.
2. REINFORCEMENT—AS PER CSA A257.4-09.
3. COVER—MINIMUM 25 mm ON ALL REINFORCING STEEL.
4. ENGINEERED GROUT—NON-SHRINK, 50 MPa AT 28 DAYS, TO BE INSTALLED ONLY AS PER MANUFACTURER'S APPLICATION GUIDELINES.
5. SHIMS—INSTALL 3X STACKS OF SHIMS, HEIGHT AS REQUIRED TO SET ADJUSTMENT UNIT TO CORRECT HEIGHT AND SLOPE. MINIMUM STACK HEIGHT: 25 mm. SHIM MATERIAL AND DIMENSIONS AS PER IFC-MH24-005.
6. ANCHOR DOWELS—DRILL 4 - Ø25 ∇100 mm MIN @ Ø954 mm AROUND MH OPENING. CLEAN HOLES AND SET 4 - 200 mm 15M REBAR ANCHOR DOWELS IN HOLES. CONSULT DECAST LTD. FIELD SERVICES FOR APPROVAL OF ALTERNATE DOWELS, e.g. CURB DOWELS.



3. INSTALLATION ON FLAT CAP OR CHAMBER

NOTICE: PROPRIETARY SUBJECT MATTER THIS DRAWING CONTAINS SUBJECT MATTER PROPRIETARY TO DECAST LTD. AND MAY BE COVERED BY ONE OR MORE INTELLECTUAL PROPERTY RIGHTS INCLUDING TRADE SECRET CONFIDENTIAL INFORMATION, COPYRIGHT, PATENT, DESIGN AND OTHER INTELLECTUAL PROPERTY RIGHTS OF DECAST LTD. UPON RECEIPT OF THIS DRAWING THE RECIPIENT IRREVOCABLY AGREES THAT ALL CONTENTS OF THE DRAWING TOGETHER WITH THE INTELLECTUAL PROPERTY RIGHTS THERETO IS AND REMAIN THE PROPERTY OF DECAST LTD. NO RIGHT TO REPRODUCE, DISCLOSE, DISSEMINATE OR OTHERWISE DEAL WITH THE SUBJECT MATTER OF THE DRAWING IS GIVEN NOR IS ANY LICENSE RIGHT OR OTHER ENTITLEMENT GIVEN WITH RESPECT TO THE INTELLECTUAL PROPERTY RIGHTS IN THE SUBJECT MATTER WITHOUT THE EXPRESS PRIOR WRITTEN PERMISSION OF DECAST LTD.

DECAST

T: 705 734 2892
TF: 800 461 5632
F: 705 734 2920

8807 COUNTY ROAD 56
UTOPIA, ON L0M 1T0
decastltd.com

PROJECT: IFC-MH		DESCRIPTION: IFC MAINTENANCE HOLE GENERAL ASSEMBLY		
MATERIAL: N/A, ASSEMBLY	WEIGHT: N/A	DWG No: IFC-701.031		
DRAWN BY: IB	CHK'D BY: DA	DATE: 2017.08.02	SCALE: 1:20	PAGE No: 1 OF 1
		REVISED: 2018.09.28		REVISION: 2